

Proicere, Inc.

Dreamweaver: Basics

Lesson Notes

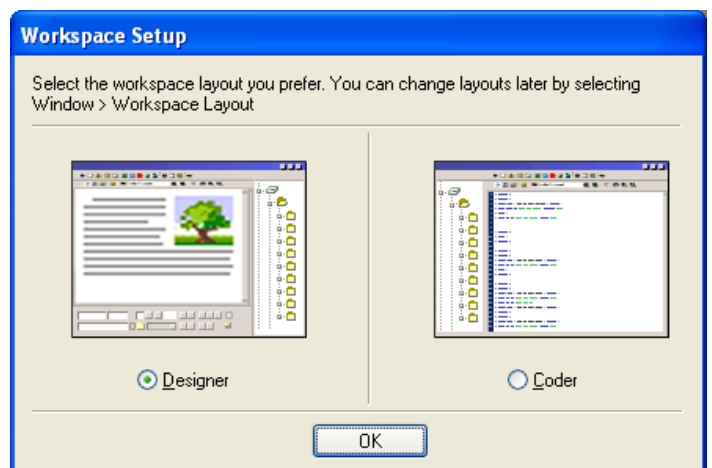
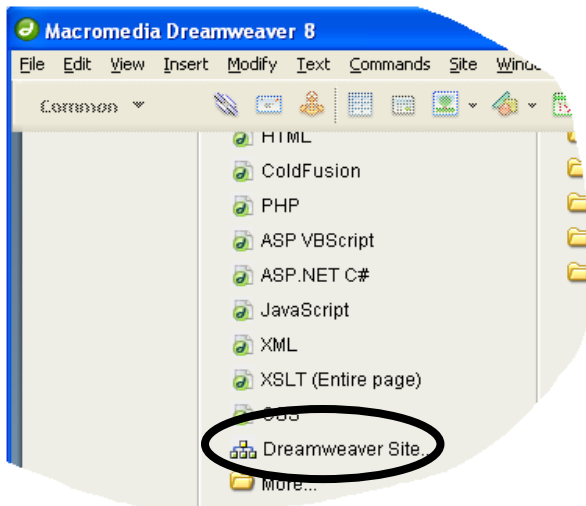
Author: Pamela Schmidt

Creating a Workspace

When Dreamweaver is initially started, a dialog box will appear for the selection of the type of Workspace to be used.

Choose the “Designer” view.

In the dialog box that opens, choose “Dreamweaver Site”



The Site wizard will start.

Give your web site a name.

Choose “No, I do not want to use a server technology”

Choose “Edit local copies on my machine...”

Choose the location where you wish to place the web site.

Choose “FTP”